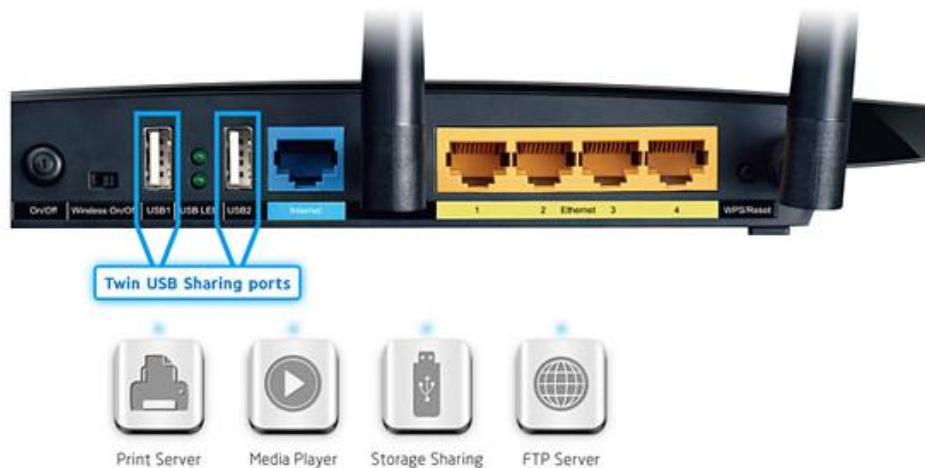


How to Use the Remote Storage Sharing (FTP) Feature

The RemoteStorage Sharing feature allows you to share a USB storage device that's connected to the router, (USB Drive or mobile Hard Disk Drive) to other users on the other side of Internet.

HOW TO SET UP:

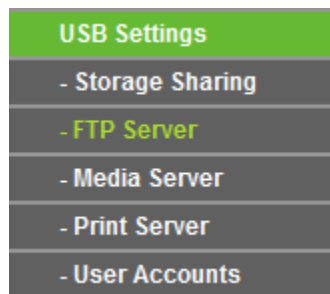
Plug the USB storage into the USB port of the TP-LINK router and wait until the USB LED is solid green.



You can setup the Remote Storage Sharing by the following steps:

Step 1 Open a web browser (IE/Chrome/Firefox/Safari), type **tplinklogin.net** in the address bar, and then press Enter button.

Step 2 Type the username and password in the login page, the default username and password are both **admin** (in lower case), then click OK to log into the router, Click **USB Settings** -> **FTP Server** on the left side menu.



Step 3 Before configuring the FTP Server, the USB storage device must be recognized first. Click **Add New Folder to Share** button.

FTP Server Configuration

Server Status: **Started**

Internet Access: Enable Disable

Service Port: (The default is 21, do not change unless necessary.)

Internet Address: 0.0.0.0

Step 4 Click on the volume you want to share. You can also **share the entire partition**. Customize the Display Name and click **Save**.

Add or Modify Share Folder

Display Name:

Partition: Share entire partition

Folder Location: /

Select	Folder
<input type="button" value="upper"/>	
<input type="radio"/>	<input type="text" value="volume1"/>
<input type="radio"/>	volume2

Current No. Page

Step 5 Your shared folders will be listed on the FTP home page.

*Note: If you want to share the content to users on the other side of Internet, you can enable the **Internet Access**. Please select **Enable**. Then click **Save**. In the end, click **Start** to start the FTP function.*

FTP Server Configuration

Server Status: **Stopped** 3

Internet Access: 1 Enable Disable

Service Port: (The default is 21, do not change unless necessary.)

Internet Address: 83.55.232.89

Name	Partition	Folder	Modify
folder1	volume1	volume1	Edit Delete

2

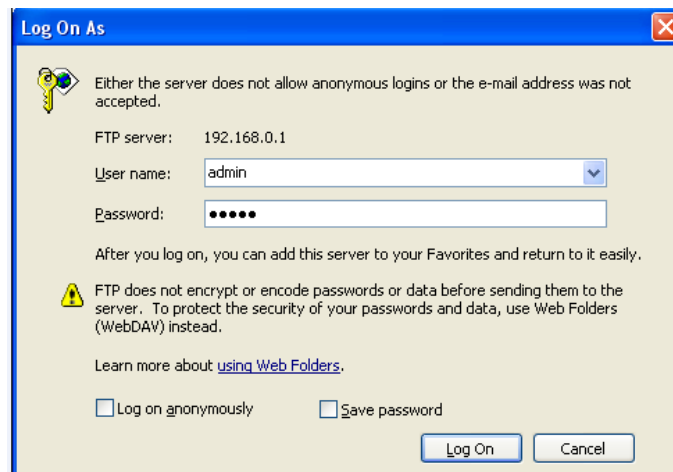
Step 6 Click **USB Settings** -> **User Accounts** to edit or create a new account. The default two accounts are **admin** and **guest**.

User Name	Password	Storage Authority	FTP Access	Modify
admin	admin	Read and Write	yes	Edit Delete
guest	guest	Read Only	yes	Edit Delete
tpink	tpink	Read and Write	yes	Edit Delete
hello	hello	Read Only	yes	Edit Delete

Access the Storage in Local Network

Please open the web browser or the third party FTP client software, type in address **ftp://tplinklogin.net** and press enter. Then type in your account to access to the FTP server.

*Note: The default **Read and Write** account is **admin/admin**; the default **Read Only** account is **guest/guest**.*



Access the Storage on the Other Side of Internet

Please open the web browser or the third party FTP client software, type in address **ftp://Your Router's Internet Address** and press enter. Then type in your account to access to the FTP server.

*Note: The **Internet Address** is showed on the page*

*Note: The default **Read and Write** account is **admin/admin**; the default **Read Only** account is **guest/guest**.*

Note:

Some USB storage devices may require using the bundled external power.

If the FTP server can't take effect immediately, please wait a few minutes. Or restart the service by clicking stop/start button.

To setup different accounts for access rights protection, please log into to the Web management page and set it on USB Settings > User Accounts.